



California Home & Patio Show • February 10 - 12, 2012

Event Productions, Inc. is pleased to have been selected as the Exclusive Service Contractor for the **California Home & Patio Show** at the San Mateo Event Center, February 10 - 12, 2012. Enclosed in this package you will find order forms to assist you in preparing for this event. Please review these forms carefully. If you have any questions regarding freight or any of the enclosed service order forms, please feel free to call us at the numbers below. Have a great show.

Event Productions, Inc.

Address 651 West Tower Ave. • Alameda, CA 94501
 Phone 800-234-8064
 Fax 510-217-7065
 Email info@eventproductions.com
 Web www.eventproductions.com
 Office Hours Monday - Friday 8 AM - 4:30 PM PST

Exhibit Site San Mateo Event Center • 2495 S. Delaware St. • San Mateo, CA 94403
Exhibit Site Phone 650-465-6475
Colors Black

Your Booth includes 10' wide x 10' deep booth structure
 Flame retardant 8' back drape & 3' side dividers
 1 - 7" x 44" I.D. sign

EPI Furnishings will be inventoried prior to show opening

Review the following pages for order forms to upgrade your booth package furniture, arrange union labor services and order material handling. Advance Warehouse and Show-site delivery via common carrier, FedEx, UPS etc. are not included with the price of the booth. **Electrical by C.E.E.S. Preferred Carrier: UPS Freight 800-988-9889**

Deadlines & Dates

Tuesday Jan. 24 *Discount Deadline for Exhibitor Orders & Payments*

Friday Jan. 6 Advance Shipments will be accepted at our Warehouse starting this day
 Friday Feb. 3 Last day Advance Shipments will be accepted without additional charges

Thursday Feb. 9 Direct Shipments *must* arrive at the Exhibit site 8 AM - 5 PM
 Thursday Feb. 9 Exhibitor Set-up 10 AM - 8 PM

Friday Feb. 10 Show Hours 12 PM - 6 PM
 Saturday Feb. 11 Show Hours 10 AM - 6 PM
 Sunday Feb. 12 Show Hours 10 AM - 5 PM

Monday Feb. 13 Exhibitor Tear-down 8 AM - 2 PM

Shipment Addresses

| Advance Warehouse | Direct Shipments |
|---|--|
| <i>Arrive between January 6 - February 3, 2012</i> | <i>Must arrive February 9 starting at 8 AM</i> |
| Event Productions, Inc. 651 West Tower Ave. Alameda, CA 94501 | San Mateo Event Center C/O Event Productions, Inc. 2495 S. Delaware St. San Mateo, CA 94403 |
| CH&P 2012 Exhibitor Name & Booth Number(s) | CH&P 2012 Exhibitor Name & Booth Number(s) |

Payment Policy

Event Productions, Inc.

651 West Tower Ave.
Alameda, CA 94501
Phone: 800-234-8064, Fax: 510-217-7065

CH&P 2012

February 10 - 12, 2012

Payment Policy - 100% including applicable tax is due at show site.

Full payment must be included with all orders. Purchase Orders are not considered advance payment. Payment may be made by company check or credit card authorization.

Advance Discount: TO OBTAIN THE DISCOUNT PRICE, FULL PAYMENT MUST BE INCLUDED WITH YOUR ORDER. **All orders must be received no later than *December 20, 2011*.** No telephone orders accepted.

NO REFUNDS on any cancellation 10 days prior to show.

Any additional costs incurred for orders or services placed at show site, including labor and material handling, are due and payable upon presentation of the invoice.

All adjustments must be made at show site.

ABSOLUTELY NO CREDITS WILL BE ISSUED AFTER SHOW CLOSING.

All accounts must be settled at the Event Productions Service Desk prior to show closing. Your show site representative must be made aware of this policy and have means of payment. See Payment & Calculation of Orders Form.

All third party billing must be arranged in advance.

INTERNATIONAL EXHIBITORS: We require 100% pre-payment of advance orders. Payment must be rendered by cash, check (payable in U.S. dollars drawn on a U.S. account), American Express, MasterCard, or Visa credit cards.

If you have any questions regarding payment procedures, please contact Event Productions Customer Service Department at (800) 234-8064.

Limits of Liability & Responsibility

Event Productions, Inc.

651 West Tower Ave.
Alameda, CA 94501
Phone: 800-234-8064, Fax: 510-217-7065

CH&P 2012

February 10 - 12, 2012

1. All materials shipped by exhibitors should be insured by Exhibitor. Event Productions, Inc. is not an insurer. It is agreed that the limits of our liability are to the specific article that was physically lost or damaged. In all instances, our maximum limit of liability will be \$0.30 per pound per article. It is understood that these limits are unrelated to the value of the shipments.
2. Claims of loss or damage must be submitted to Event Productions, Inc. by the close of the show. No suit or action shall be brought against Event Productions, Inc. more than one year after the show.
3. In order to expedite removal of materials from the show site, Event Productions, Inc. shall have the authority to change designated carriers if such carriers do not pick up on time. Where no deposition is made by the Exhibitor, materials will be re-routed at Event Productions, Inc. discretion, and the Exhibitor agrees to be responsible for payment of charges relating to such re-routing. Event Production, Inc. assumes no liability as a result of such re-routing.
4. Event Productions, Inc. shall not be held liable for any damage incurred during the handling of equipment requiring special devices to properly load, place or reload unless advance written notice has been given to Event Productions, Inc. 30 days prior to show.
5. Empty container labels will be available at the Event Productions, Inc. service desk. Placing these labels on Exhibitor crates is the sole responsibility of the Exhibitor or its representative. It is understood that these labels are used for EMPTY STORAGE ONLY, and Event Productions, Inc. assumes no responsibility for loss or damage to contents while containers are in storage or for mislabeled containers.
6. Event Productions, Inc. shall not be responsible for regular wear and tear in handling of equipment, or for loss or damage due to fire, theft, water, vandalism or other causes beyond our control.
7. The Exhibitor agrees, in the event of a dispute with Event Productions, Inc. relative to any loss or damage to material or equipment, that the Exhibitor will not withhold payment in any amount to Event Productions, Inc. for material handling or any other services provided by Event Productions, Inc. as an offset against the amount of the alleged loss or damage. Instead, the Exhibitor agrees to pay Event Productions, Inc. prior to the close of the show the full amount due and further agrees that any claim the Exhibitor may have against Event Productions, Inc. shall be pursued independently by the Exhibitor as a completely separate transaction to be resolved on its own merits.
8. Event Productions, Inc. will not be responsible for loss, delay or damage due to strikes, lockouts or work stoppages of any kind.
9. The Exhibitor agrees, in connection with the receipt, handling, temporary storage and reloading of its materials, that Event Productions, Inc. will provide these services as the Exhibitor's agent and not as bailee or shipper. If any employee of Event Productions, Inc. signs a delivery receipt, bill of lading or other document, we agree that Event Productions, Inc. will do so as the Exhibitor's agent, and the Exhibitor accepts the responsibility thereof.
10. In regards to inbound shipments, there may be a lapse of time between the delivery of the shipment(s) to the booth by Event Productions, Inc. and the arrival of the Exhibitor's representative at the booth. Similarly, relative to outgoing shipment(s), it is possible that there may be a lapse of time between the completion of packing and actual pick-up of materials from the booth for loading onto a carrier. It is understood that during such time the shipment(s) will be left in the booth unattended.

It is agreed that Event Productions, Inc. is not responsible for the loss or disappearance of Exhibitor's materials after the same have been delivered to Exhibitor's booth, and Event Productions, Inc. is not responsible for Exhibitor's materials before they are picked up from the Exhibitor's booth for loading after the show. All bills of lading covering outgoing shipment(s) submitted to Event Productions, Inc. by the Exhibitor will be checked at the time of pick-up from the booth and corrected if discrepancies do exist.

Fire & Safety Regulations and Requirements

Event Productions, Inc.

651 West Tower Ave.
Alameda, CA 94501
Phone: 800-234-8064, Fax: 510-217-7065

CH&P 2012

February 10 - 12, 2012

1. All exits and exit aisles must be kept clear and unobstructed. No furniture, signs, easels, chairs or displays may protrude into aisles.
2. All fire hose racks, fire extinguishers and emergency exits must be visible and accessible at all times. Including fire protection equipment located within exhibits.
3. All empty shipping cases, cartons or crates must be labeled and removed for storage or they will be removed as trash.
4. No storage of any kind is allowed behind booths or near electrical service. Materials for handouts must be limited to a one-day supply and must be stored neatly within the booth.
5. All temporary wiring must be accessible and free from debris and storage materials.
6. All 110 volt extension cords shall be 3-wire (grounded), #14 or larger AWG, copper wire. Two-wire, "Zip Cords" are not permitted other than factory installed appliance connectors; these may not exceed six (6) feet in length and must be UL approved.
7. Cube tap adapters are prohibited. Multi-plug connectors must be UL approved with built-in overload protection.
8. Electrical work under carpets must be done, or supervised by the Electrical Contractor.
9. Vehicles on display:
 - A. Fuel tank openings shall be locked or sealed to prevent escape of vapors.
 - B. Fuel tanks must have less than a quarter tank of gas.
 - C. Batteries must be disconnected. Auxiliary batteries not connected to engine starting system may be left connected.
 - D. External chargers are recommended for demonstration purposes.
10. Combustible materials must not be stored beneath display vehicles.
11. Vehicles in building for unloading must not be left with engines idling.
12. Compressed gas cylinders, including LPG, are prohibited unless approved by the Fire Safety Office.

Union Regulations

Event Productions, Inc.

651 West Tower Ave.
Alameda, CA 94501
Phone: 800-234-8064, Fax: 510-217-7065

CH&P 2012

February 10 - 12, 2012

To assist you in planning for your participation in the forthcoming event, we are certain you will appreciate knowing in advance that union labor will be required for certain aspects of your exhibit setup. Please note that preordered labor is substantially less than onsite orders. To help you understand the jurisdiction the various unions have, we ask that you read the following:

EXHIBIT INSTALLATION/DISMANTLING

Union jurisdictions prevail over all set-up and dismantling of exhibits including signs and laying of carpet. This does not apply to the unpacking and placement of your merchandise. **You may set-up your 10' exhibit display if one person can accomplish the task in less than 1/2 hour without the use of tools.** Union jurisdiction prevails on Exhibits that extends over 10 feet in any direction.

If your exhibit preparations, installation or dismantling requires more than 1/2 hour, and/or the use of tools, you must use the appropriate union personnel. One full-time company employee may supervise/work with the union crew.

MATERIAL HANDLING

Union jurisdictions prevail over the operation of all material handling equipment, all unloading and reloading, and handling of empty containers. **An exhibitor may move material that can be hand-carried by one person in one trip, without the use of dollies, hand trucks, or other mechanical equipment.** No one, other than the official contractor's employees, is allowed to use dollies, hand trucks, or other mechanical equipment. This includes, but is not limited to, I&D employees, hotel employees and facility employees.

TIPPING

Event Productions requests that exhibitors do not tip our employees. They are paid an excellent wage scale denoting a professional status, and we feel that tipping is not necessary. This applies to all Event Production employees.

SAFETY

Standing on chairs, tables or other rental furniture is prohibited. This furniture is not engineered to support your standing weight. Event Productions cannot be responsible for injuries or falls caused by the improper use of this furniture. If assistance is required in assembling your booth, please order labor on the Display Labor order form and the necessary ladders and tools will be provided.

Calculation & Payment of Orders

Event Productions, Inc.

651 West Tower Ave.
Alameda, CA 94501
Phone: 800-234-8064, Fax: 510-217-7065

CH&P 2012

February 10 - 12, 2012

COMPANY NAME _____ BOOTH _____
STREET ADDRESS _____ APT/STE _____
CITY _____ STATE _____ ZIP _____
CONTACT _____ PHONE _____ FAX _____

Credit Card Charge Authorization

Please check the appropriate card: _____ American Express _____ MasterCard _____ Visa

Card Number: _____ Expiration: _____ Security Code _____

X _____
Cardholder's Signature _____ Cardholder's Name - Print _____

I have read, understand and agree to all items as described on this form, the Payment Policy Form, and the Limits of Liability and Responsibility form and have advised our show site representative accordingly.

Calculation of Orders - Total from each order form

Dollar Amount

| | |
|------------------------------------|-------|
| Home Show Specials..... | _____ |
| Booth Package Special..... | _____ |
| Furniture and Accessories | _____ |
| Chairs and Stools | _____ |
| Luxury Furniture..... | _____ |
| Plants & Floral | _____ |
| Carpet..... | _____ |
| Installation/Dismantle Labor | _____ |
| Drayage/Material Handling | _____ |
| Turnkey Exhibit Rentals..... | _____ |
| Signs..... | _____ |

Total paid in U.S. funds drawn on a U.S. bank - Check No: _____

Total amount to be charged to my credit card \$ _____

To expedite payment, send one check for the entire amount or note the amount to be charged to your credit card.

IMPORTANT: Any show site balances or charges for outbound labor, freight or miscellaneous items not paid will be charged to your credit card account where applicable.

Home Show Specials

CH&P 2012

Save Money, Order By: December 20, 2011

COMPANY NAME _____ E-MAIL _____ BOOTH _____

Event Productions, Inc. is offering Home Show exhibitors the rental items below at a reduced price!

Folding Chair



Table with Linen



Plastic Chair



| Qty | Item | Price | Total |
|-----|------------------|----------|-------|
| | Folding Chair | \$10.00 | |
| | Plastic Chair | \$ 20.00 | |
| | 4ft. Linen Table | \$ 20.00 | |
| | 6ft. Linen Table | \$ 30.00 | |
| | 8ft. Linen Table | \$ 40.00 | |

IMPORTANT: ALL ORDERS MUST BE PAID IN ADVANCE.
PLEASE INCLUDE YOUR FORM OF PAYMENT
ALL ORDERS MUST INCLUDE CALCULATION & PAYMENT FORM

ADVANCE
PAYMENT
ENCLOSED \$ _____



Booth Package Special

CH&P 2012

Save Money, Order By: December 20, 2011

COMPANY NAME _____ E-MAIL _____ BOOTH _____

Event Productions, Inc. is offering this package of rental items at a reduced price (15% off of discount price).

DISCOUNT ORDERS MUST BE RECEIVED BY December 20, 2011

ITEMS

- 1 - 6' Draped Table
- 1 - Waste Basket
- 2 - Side Chairs
- 1 - 10' x 10 Carpet

Table Drape Color (Circle One)

| | | | |
|------|-------|-------|----------|
| Gray | Blue | Red | Burgundy |
| Teal | Black | Green | White |

Carpet Colors (Circle One)

| | | | |
|----------|------|------|--------------|
| Gray | Blue | Plum | Red |
| Burgundy | Teal | Gold | Hunter Green |

This \$328.00 value is offered at \$278.00 per package.

Number _____ of Packages at \$278.00 each: _____

NO SUBSTITUTIONS on furnishings!

IMPORTANT: ALL ORDERS MUST BE PAID IN ADVANCE.
PLEASE INCLUDE YOUR FORM OF PAYMENT
ALL ORDERS MUST INCLUDE CALCULATION & PAYMENT FORM

ADVANCE
PAYMENT
ENCLOSED \$ _____



Furniture and Accessories

CH&P 2012

Save Money, Order By: December 20, 2011

COMPANY NAME _____ E-MAIL _____ BOOTH _____

ACCESSORIES

| Qty | Item | Discount | Regular | Total |
|-----|---|----------|---------|-------|
| | Ceremonial Scissors | \$30.00 | \$45.00 | |
| | Fish Bowl / Candy Bowl | 30.00 | 45.00 | |
| | Garment Rack, Rolling | 90.00 | 135.00 | |
| | Refrigerator, Small | 100.00 | 150.00 | |
| | Stanchions, Chrome, w/ Black Rope (per stanchion) | 33.00 | 50.00 | |
| | Ticket Barrel | 135.00 | 203.00 | |
| | Waste Basket | 18.00 | 27.00 | |

SPECIALTY FURNITURE

| Qty | Item | Discount | Regular | Total |
|-----|--------------------|----------|----------|-------|
| | Sofa, Leather | \$430.00 | \$645.00 | |
| | Loveseat, Leather | 350.00 | 525.00 | |
| | Arm Chair, Leather | 260.00 | 390.00 | |
| | Desk | 250.00 | 375.00 | |
| | Park Bench | 90.00 | 135.00 | |

RISERS, TABLE DISPLAYS

| Qty | Item | Discount | Regular | Total |
|-----|--------------------|----------|---------|-------|
| | Riser for 4' table | \$45.00 | \$68.00 | |
| | Riser for 6' table | 64.00 | 96.00 | |

DRAPED TABLES - 30" HIGH

NOTE: ALL TABLES ARE 24" WIDE, DRAPED TABLES ARE SKIRTED ON 3 SIDES

| Qty | Item | Discount | Regular | Total |
|--|------------------------|----------|----------|-------|
| | 4' Long Table, Draped | \$92.00 | \$138.00 | |
| | 6' Long Table, Draped | 110.00 | 151.50 | |
| | 8' Long Table, Draped | 112.00 | 168.00 | |
| | Drape all 4 sides, add | 33.00 | 43.00 | |
| Circle Color Choice: Teal Gray Blue Gold | | | | |
| Red Burgundy Black Green White | | | | |

Note: For **Undraped Tables** requests subtract 50% from price and specify on order form.

DRAPED COUNTERS - 42" HIGH

NOTE: ALL COUNTERS ARE 24" WIDE, DRAPED TABLES ARE SKIRTED ON 3 SIDES

| Qty | Item | Discount | Regular | Total |
|--|-------------------------|----------|----------|-------|
| | 4' Long Counter, Draped | \$97.00 | \$145.00 | |
| | 6' Long Counter, Draped | 116.00 | 160.00 | |
| | 8' Long Counter, Draped | 118.00 | 177.00 | |
| | Drape all 4 sides, add | 37.00 | 48.00 | |
| Circle Color Choice: Teal Gray Blue Gold | | | | |
| Red Burgundy Black Green White | | | | |

Note: For **Undraped Counters** requests subtract 50% from price and specify on order form.

DRAPED ROUND TABLE

| Qty | Item | Discount | Regular | Total |
|-----|-------------------------------|----------|----------|-------|
| | 30" Round Table / Short 30" h | \$123.00 | \$185.00 | |
| | 30" Round Table / High 40" h | 128.00 | 192.00 | |

SAVE UP TO 50%, ORDER IN ADVANCE

ADVANCE DISCOUNT TO OBTAIN THE DISCOUNT PRICE, FULL PAYMENT MUST BE INCLUDED WITH YOUR ORDER.

All orders must be received by discount deadline, to guarantee colors and availability. If no color is specified,

EPI reserves the right to choose the color on exhibitor's behalf. **No telephone orders accepted**

IMPORTANT: ALL ORDERS MUST BE PAID IN ADVANCE.
PLEASE INCLUDE YOUR FORM OF PAYMENT
ALL ORDERS MUST INCLUDE CALCULATION & PAYMENT FORM

ADVANCE
PAYMENT
ENCLOSED \$ _____



Furniture and Accessories pg. 2

CH&P 2012

Save Money, Order By: December 20, 2011

COMPANY NAME _____ E-MAIL _____ BOOTH _____

STORAGE UNITS

| Qty | Item | Discount | Regular | Total |
|-----|---|----------|----------|-------|
| | Cabinet, Laminated Double Door (not lockable) | \$150.00 | \$225.00 | |
| | Cabinet, Laminated Single Door (not lockable) | 130.00 | 195.00 | |
| | File Cabinets, 2 Drawer | 100.00 | 150.00 | |
| | File Cabinets, 4 Drawer | 150.00 | 225.00 | |

PRESENTATION ITEMS

| Qty | Item | Discount | Regular | Total |
|-----|---------------------------------|----------|----------|-------|
| | Bag Rack | \$80.00 | \$120.00 | |
| | Computer Kiosk, Sintra | 300.00 | 450.00 | |
| | Counter, Sintra .5m x 1m | 200.00 | 300.00 | |
| | Counter, Sintra .5m x 2m | 300.00 | 450.00 | |
| | Easel, Silver Metal | 40.00 | 60.00 | |
| | Literature Rack | 93.00 | 140.00 | |
| | Pedestal Stand, Square | 300.00 | 450.00 | |
| | Showcase, Glass | 302.00 | 453.00 | |
| | Tack Board 4' x 8' | 100.00 | 113.00 | |
| | White Board w/Easel 17"x23" | 65.00 | 97.50 | |
| | White Board, Freestanding 3"x4" | 250.00 | 375.00 | |

DÉCOR

| Qty | Item | Discount | Regular | Total |
|-----|---------------------|----------|----------|-------|
| | Lamp Post | \$72.00 | \$108.00 | |
| | Fountain w/o Lights | 240.00 | 360.00 | |
| | Fountain w/ Lights | 300.00 | 450.00 | |

BOOTH STRUCTURE ACCESSORIES

| Qty | Item | Discount | Regular | Total |
|-----|-----------------------|----------|---------|-------|
| | Spreader Bar | \$9.50 | \$14.25 | |
| | 8' h (masking) per ft | 5.00 | 7.50 | |
| | Upright 8' | 9.50 | 14.25 | |

STAGING

| Qty | Item | Discount | Regular | Total |
|-----|--|----------|----------|-------|
| | Wood Stage Platform 4'x8' - 12"h ___ or 24"h ___ | \$110.00 | \$165.00 | |
| | Wood Stage Platform 4'x4' - 12"h ___ or 24"h ___ | 75.00 | 112.50 | |
| | Wood Stage Platform 2'x8' - 12"h ___ or 24"h ___ | 57.00 | 85.50 | |
| | Podium, Laminated | 130.00 | 195.00 | |

SAVE UP TO 50%, ORDER IN ADVANCE

ADVANCE DISCOUNT TO OBTAIN THE DISCOUNT PRICE, FULL PAYMENT MUST BE INCLUDED WITH YOUR ORDER.

All orders must be received by discount deadline, to guarantee colors and availability. If no color is specified,

EPI reserves the right to choose the color on exhibitor's behalf. **No telephone orders accepted**

IMPORTANT: ALL ORDERS MUST BE PAID IN ADVANCE.
PLEASE INCLUDE YOUR FORM OF PAYMENT
ALL ORDERS MUST INCLUDE CALCULATION & PAYMENT FORM

ADVANCE
PAYMENT
ENCLOSED \$ _____



Chairs and Stools

CH&P 2012

Save Money, Order By: December 20, 2011

COMPANY NAME _____ E-MAIL _____ BOOTH _____

A



B



C



D



E



F



G



H



A



B



C



D



E



CHAIRS

| Qty | Style | Discount | Regular | Total |
|-----|-------|----------|---------|-------|
| | A | \$20.00 | \$20.00 | |
| | B | 35.00 | 40.00 | |
| | C | 35.00 | 40.00 | |
| | D | 40.00 | 45.00 | |
| | E | 45.00 | 50.00 | |
| | F | 50.00 | 55.00 | |
| | G | 55.00 | 65.00 | |
| | H | 60.00 | 70.00 | |

STOOLS

| Qty | Style | Discount | Regular | Total |
|-----|-------|----------|---------|-------|
| | A | \$20.00 | \$30.00 | |
| | B | 30.00 | 40.00 | |
| | C | 40.00 | 50.00 | |
| | D | 50.00 | 60.00 | |
| | E | 60.00 | 85.00 | |

IMPORTANT: ALL ORDERS MUST BE PAID IN ADVANCE.
PLEASE INCLUDE YOUR FORM OF PAYMENT
ALL ORDERS MUST INCLUDE CALCULATION & PAYMENT FORM

ADVANCE
PAYMENT
ENCLOSED \$ _____



Luxury Furniture

CH&P 2012

Save Money, Order By: December 20, 2011

COMPANY NAME _____ E-MAIL _____ BOOTH _____

Event Productions has teamed up with Exotic Green Furniture to provide you with some luxury items to help attract attendees to your booth. Themed sets available, or you can order a couple individual items. full list of items available at: <http://eventproductions.com/boothrentals/>

Lounge Chairs

| Qty | Style | Discount | Regular | Total |
|-----|---|----------|----------|-------|
| |  | \$300.00 | \$350.00 | |
| |  | 400.00 | 450.00 | |
| |  | 400.00 | 450.00 | |
| |  | 500.00 | 550.00 | |
| |  | 100.00 | 145.00 | |
| |  | 45.00 | 50.00 | |

Chairs and Stools

| Qty | Style | Discount | Regular | Total |
|-----|---|----------|----------|-------|
| |  | \$200.00 | \$250.00 | |
| |  | 130.00 | 170.00 | |
| |  | 150.00 | 170.00 | |
| |  | 150.00 | 175.00 | |
| |  | 150.00 | 175.00 | |
| |  | 60.00 | 85.00 | |

IMPORTANT: ALL ORDERS MUST BE PAID IN ADVANCE.
PLEASE INCLUDE YOUR FORM OF PAYMENT
ALL ORDERS MUST INCLUDE CALCULATION & PAYMENT FORM

ADVANCE
PAYMENT
ENCLOSED \$ _____



Luxury Furniture pg. 2

CH&P 2012

Save Money, Order By: December 20, 2011

COMPANY NAME _____ E-MAIL _____ BOOTH _____

Couches

| Qty | Style | Discount | Regular | Total |
|-----|---|----------|----------|-------|
| |  | \$600.00 | \$750.00 | |
| |  | 600.00 | 750.00 | |
| |  | 600.00 | 750.00 | |
| |  | 600.00 | 750.00 | |
| |  | 1500.00 | 1700.00 | |
| |  | 300.00 | 400.00 | |
| |  | 300.00 | 400.00 | |

Tables

| Qty | Style | Discount | Regular | Total |
|-----|--|----------|----------|-------|
| |  | \$100.00 | \$150.00 | |
| |  | 100.00 | 150.00 | |
| |  | 100.00 | 150.00 | |

Lamps

| Qty | Style | Discount | Regular | Total |
|-----|---|------------|-------------|-------|
| |  | \$75.00 ea | \$100.00 ea | |
| |  | 75.00 | 100.00 | |
| |  | 75.00 | 100.00 | |

IMPORTANT: ALL ORDERS MUST BE PAID IN ADVANCE.
PLEASE INCLUDE YOUR FORM OF PAYMENT
ALL ORDERS MUST INCLUDE CALCULATION & PAYMENT FORM

ADVANCE
PAYMENT
ENCLOSED \$ _____



Plants & Floral for Special Events

CH&P 2012

Save Money, Order By: December 20, 2011

COMPANY NAME _____ E-MAIL _____ BOOTH _____

Plants

Floral Arrangements

| Qty | Item | Discount | Regular | Total |
|-----|--------------------------------------|----------|---------|-------|
| | Floral Arrangement, with Vase Small | \$50.00 | \$75.00 | |
| | Floral Arrangement, with Vase Medium | 75.00 | 112.50 | |
| | Floral Arrangement, with Vase Large | 90.00 | 135.00 | |

List Color Arrangement / Preferences:

Ferns

| Qty | Item | Discount | Regular | Total |
|-----|----------------------------|----------|---------|-------|
| | Fern Small / for Table Top | \$30.00 | \$45.00 | |
| | Fern Large | 35.00 | 52.50 | |

Green Plants

| Qty | Item | Discount | Regular | Total |
|-----|---------------------|----------|---------|-------|
| | 2' - 3' Green Plant | \$42.00 | \$63.00 | |
| | 4' Green Plant | 55.00 | 82.50 | |
| | 5' Green Plant | 62.00 | 93.00 | |
| | 6' - 8' Green Plant | 89.00 | 133.50 | |

Potted Plants

| Qty | Item | Discount | Regular | Total |
|-----|------------------------|----------|---------|-------|
| | Potted Flowering Plant | \$35.00 | \$52.50 | |

Circle Color Of Choice:

Yellow White Red Assorted



Note: Plants may look different then pictured above.

Save up to 50% Order in Advance

Props may require cost of labor to install. Minimum orders and delivery charges may apply. Quantities on specific items may be limited. All orders must be received no later than ten (10) working days prior to Show opening. **No telephone orders accepted.**

IMPORTANT: ALL ORDERS MUST BE PAID IN ADVANCE.
PLEASE INCLUDE YOUR FORM OF PAYMENT
ALL ORDERS MUST INCLUDE CALCULATION & PAYMENT FORM

ADVANCE
PAYMENT
ENCLOSED \$ _____



Standard/Custom Carpet

CH&P 2012

Save Money, Order By: December 20, 2011

COMPANY NAME _____ E-MAIL _____ BOOTH _____

STANDARD CARPET

| Qty | Size | Discount | Regular | Total |
|-----|---------|-----------|-----------|-------|
| | 10 x 10 | \$ 137.00 | \$ 205.50 | |
| | 10 x 20 | 273.00 | 409.50 | |
| | 10 x 30 | 410.00 | 615.00 | |
| | 10 x 40 | 536.00 | 804.00 | |
| | 10 x 50 | 670.00 | 1,005.00 | |

STANDARD SIZES INCLUDE TAPING OF FRONT EDGE ONLY.

Color: Gray Red Plum Blue
 Burgundy Teal Gold Hunter Green

SPECIAL CUT STANDARD CARPETING

Special sizes are available at \$4.00 per square foot in any dimensions. Price includes cutting, laying and taping front seams and edges.

Carpet Size: _____ x _____ = _____ sq. ft. x \$4.00 = \$ _____

Color: Gray Red Plum Blue
 Burgundy Teal Gold Hunter Green

Special Cut Carpet must be ordered by Deadline - December 20, 2011

CARPET PADDING

1/2" Foam Padding is available at \$2.25 per square foot - installed

Size: _____ x _____ = _____ sq. ft. x \$2.25 = \$ _____

PLUSH CARPET

Plush Carpet is available on a rental basis. Our Plush Carpet is offered at \$5.50 per square foot.* Price includes cutting, laying and taping front seams and edges. Price does not include special cuts. Orders must be placed no later than (14) working days prior to show opening to guarantee availability.

Carpet Size: _____ x _____ = _____ sq. ft. x \$5.50 = \$ _____

***Plush Carpet must be ordered by Deadline
December 20, 2011***

Plush Carpet Colors:

| | | |
|-------------|--------------|-----------|
| White | Silver Cloud | Blue Mist |
| Colony Blue | French Beige | Red |
| Charcoal | Navy | Plum |
| Berry | Burgundy | Black |
| Gray Pearl | Emerald | |

Samples available on request.

****Special Cut and Plush Carpet orders cancelled after they have been received will be charged 100%.***

VISQUEEN

Visqueen is available at \$1.50 per square foot - installed

Size: _____ x _____ = _____ sq. ft. x \$1.50 = \$ _____

Save up to 50%, Order in Advance

PAYMENT POLICY: All invoices must be settled at our Service Desk prior to the closing of the Show. For your convenience, Mastercard, American Express, and Visa credit cards will be accepted. No credits will be issued after the closing date of the show.

ADVANCE DISCOUNT: TO OBTAIN THE DISCOUNT PRICE, FULL PAYMENT MUST BE INCLUDED WITH YOUR ORDER.

All orders must be received no later than ten (10) working days prior to Show opening. **No telephone orders accepted.**

IMPORTANT: ALL ORDERS MUST BE PAID IN ADVANCE.
 PLEASE INCLUDE YOUR FORM OF PAYMENT
ALL ORDERS MUST INCLUDE CALCULATION & PAYMENT FORM

ADVANCE
 PAYMENT
 ENCLOSED \$ _____



Complimentary Onsite Freight Form

CH&P 2012

Save Money, Order By: December 20, 2011

COMPANY NAME _____ E-MAIL _____ BOOTH _____

Important - Please Read!

World Class Shows has made an arrangement to pay for all loading and unloading of your personal vehicles. Please see below for requirements.

To qualify for the free truck unload/reload:

- Vehicle must arrive between 2 PM and 5 PM on Wednesday, February 8, or between 8 AM and 5 PM on Thursday, February 9.
- Must arrive on own company or personally owned/rented vehicle.
- This free service does not include UPS, FedEx, common carrier, courier, air freight or any other freight delivery service. Please see our drayage rate sheet for advance warehouse or direct shipment rates.
- Exhibitor must be present and the unloading must be done at exhibitor's direction. Exhibitor is responsible for damage to materials or vehicle.
- Must not require the storage of empty crates, pallets, packing or product.
- Outbound freight must be delivered to exhibitor's vehicle by 2 PM on Monday February 13.
- Vehicles that arrive after 5 PM during move-in or 2 PM during move-out will be subject to a fee of \$250

Please call if you have any questions.



Drayage / Material Handling Rate Schedule

CH&P 2012

\$ Per Cwt Minimum Charge / Minimum Weight
(100 lbs.) Per Shipment

| | | | |
|---|------------|----------------|-----------------------------|
| WAREHOUSE - ADVANCE SHIPMENTS Shipments of common freight and crated exhibits will be received and stored up to 30 days prior to set up date, delivered to booth, and delivered from booth to common carrier at loading area at close of show. We will furnish loading labor and equipment. This includes removal, storage and return of empty crates when necessary. Loose, uncrated and blanket wrapped shipments must be sent directly to show site. | | \$63.00 | \$126.00 / 200 lbs. |
| EXHIBIT HALL - DIRECT SHIPMENTS Shipments of common freight and crated exhibits will be received at the show site <i>during installation period only</i> from common carrier or owner's truck and will be unloaded and delivered to booth. At close of show, freight will be delivered from booth to carrier at loading area. We will furnish loading labor and equipment. This includes removal, storage and return of empty crates when necessary. | | \$65.00 | \$130.00 / 200 lbs. |
| A. Late Delivery Freight received at warehouse within 72 hours prior to show opening will be charged an additional | ADD | 30% | |
| B. Special Handling Service - Specialized Shipments Shipments packed in a manner requiring additional handling and/or special equipment to load and unload; i.e. blanket wrapped, double checked shipments, side door or ground loading and unloading, designated piece handling or carriers that do not leave a delivery receipt (UPS, FedEx, ect) will be charged an additional | ADD | \$23.00 | |
| C. Return to Warehouse For delivery of shipments, at close of show, back to warehouse for loading to outbound carrier, the additional charge will be | ADD | \$30.00 | \$300.00 / 1000 lbs. |
| D. Overtime Charge (Inbound and/or Outbound) All rates quoted above are straight time rates. All freight received that must be moved into or out of the booth before 8:00 am or after 4:30 pm on weekdays will be charged overtime rates. Anytime on Saturday, Sunday or Holidays will be charged overtime each way in addition to the above rates. | | | |

Important Additional Information Regarding Drayage / Material Handling:

- Rates are based on incoming weight only.
- All weights are rounded up to the nearest cwt.
- Special handling service charges will not be split for mixed shipments, the higher rate will apply.
- Drayage/Material Handling Rates do not include any erection, uncrating, unskidding, dismantling, crating, skidding, blocking or bracing of cars.
- Shipments arriving with dimensional weights will be charged at the weight stated on the bill of lading at the time of delivery unless weight certificate is attached. No retroactive credits will be issued.
- All shipments should be insured by the Exhibitor from the time they leave their firm until they are returned from the show. In all instances, our maximum limit of liability will be \$0.30 per pound per article. (See Limits Of Liability)**
- Shipments received without receipts or freight bill, such as UPS, will be delivered to booth without guarantee of piece count or condition. No liability will be assumed for such shipments. Shipments received on separate days will be treated as separate minimum shipments.
- We are not responsible for shipments left in booth by Exhibitor. We will count and ship pieces as we find shipment when we remove it from the exhibit hall.
- We will not be responsible for any concealed damage, for loss or theft of materials after same have been delivered to booth, or before we have picked up for load out of exhibit hall.
- At the close of the show, if carriers fail to pick up or refuse to accept shipment, we reserve the right to reroute such shipments, or haul material to a warehouse pending advice from the exhibitor who will be charged accordingly for this service. No liability will be assumed as a result of such rerouting or handling.
- Please ship early and ship prepaid. **We will not accept collect shipments.**
- By consigning shipments to the show, the Exhibitor acknowledges and accepts the foregoing information and conditions.
- UPS Package and FedEx have their own requirements for picking up and payment. It is the exhibitors responsibility to know these requirements, if they choose to use UPS package, or FedEx.**

Advance Ship To:

Event Productions, Inc.
651 West Tower Ave.
Alameda, CA 94501

CH&P 2012
(Exhibitor Name and Booth #)

Drayage / Material Handling Form

CH&P 2012

COMPANY NAME _____ E-MAIL _____ BOOTH _____

First, please indicate the total weight* of your shipment _____

Note: Exhibitors who are using UPS or FedEx for outbound shipments, are required to know and comply with those carriers regulations and rules. EPI can not supply required barcoded labels.

Shipment Rates

| Item | Advance | Direct |
|--|---------|---------|
| Base Rate per 100 pounds (cwt) | \$63.00 | \$65.00 |
| Overtime Inbound Charge <i>This charge is based on a 25% fee for overtime move-in</i> | N/A | N/A |
| Overtime Outbound Charge <i>This charge is based on a 25% fee for overtime move-out</i> | N/A | N/A |
| Total Rate per 100 pounds | \$63.00 | \$65.00 |

BOX A

| Item | Advance | Direct |
|---|---------|---------|
| Total weight of shipment (round up to nearest 100 lbs) 200 lbs minimum | LB | LB |
| Multiply by rate <i>Example: 600 lbs of freight will be 6 x Rate</i> | \$63.00 | \$65.00 |
| Total for Weight Charges | \$ | \$ |

BOX B These charges apply to *special services & handling charges including late delivery, special handling, return to warehouse and overtime charges.*

| Item | Rate Per 100 lb | Advance | Direct |
|---|--------------------|---------|--------|
| Late Delivery | 30% | \$ | \$ |
| Special Handling | \$23.00 | \$ | \$ |
| Return to Warehouse (1,000 lb., \$300 minimum charge) | \$30.00 | \$ | \$ |
| Total Rate per 100 pounds | | \$ | \$ |

Total Drayage Cost Calculation Please fill out the appropriate information in the chart below for Advance and Direct Shipments

| | Charges | Advance | Direct |
|----|---|---------|--------|
| A1 | Total Weight Charges Total from BOX A | \$ | \$ |
| A2 | Special Services & Handling Charges Total from BOX B | \$ | \$ |
| | Total Charges for Material Handling Total from A1 and A2 | \$ | \$ |

IMPORTANT: ALL ORDERS MUST BE PAID IN ADVANCE.
PLEASE INCLUDE YOUR FORM OF PAYMENT
ALL ORDERS MUST INCLUDE CALCULATION & PAYMENT FORM

ADVANCE
PAYMENT
ENCLOSED \$ _____



Freight Questionnaire

CH&P 2012

Save Money, Order By: December 20, 2011

Important: All exhibitors MUST return this form.

COMPANY NAME _____ E-MAIL _____ BOOTH _____

Exhibitors must return this form by: *December 20, 2011*

1) Name of person(s) in charge of your move-in:

2) Heaviest single piece that must be lifted:

Description: _____ **Lbs** _____

3) Please explain any special handling equipment required to unload your material, i.e. extended forklift blades, lifting bars, etc.

4) Indicate number of trucks in each category that you will use and the carrier name:

_____ Van Line - Carrier Name: _____

_____ Common Carrier - Carrier Name: _____

_____ Company Truck

5) Estimated number of pieces being shipped: _____ crated _____ uncrated _____ machinery _____ other

Direct Shipments:

Please list the dates and times you have scheduled for your direct shipments to arrive on site

IMPORTANT! - Plan outbound shipping

Outbound carrier _____

Scheduled pickup time _____

All orders are covered by Event Productions, Inc. Payment Policy and Event Productions, Inc. Limits of Liability & Responsibility.

Move-Out Notice

Event Productions, Inc.

651 West Tower Ave.
Alameda, CA 94501
800.234.8064 Phone
888.534.8064 Fax

Thank you for participating in the:

California Home & Patio Show

Please take a few moments to review the following important dates, times and information for show move-out:

| | | |
|--------------------|---|-------------|
| Sunday February 12 | Show closes | 5 PM |
| Monday February 13 | Move-out | 8 AM - 2 PM |
| | Empty containers returned | 8 AM |
| | Bills of lading must be returned by | 1:15 PM |
| | All carriers must check-in with service desk by | 1:30 PM |
| | Remaining freight on floor will be re-routed or returned to warehouse at EPI's discretion | 2 PM |

- **Keep aisles clear of debris during move-out**
- **Containers returned in the following order: cardboard boxes, fiber cases, crates**
- **All outbound shipments require an EPI bill of lading**
- **Please return all bills of lading to service desk – do not leave them in booth**
- **Return bills of lading only when materials are packed, labeled and ready to ship**
- **Exhibitors not using preferred carrier are responsible for arranging pick-up of freight from show**

For Fed-Ex and UPS Pick-ups: Event Productions, Inc. does not schedule pick-ups for Fed-Ex or UPS and does not carry shipping forms for these carriers on show site. A fully executable Fed-Ex/UPS bill of lading and shipping labels are required in addition to EPI's bill of lading. It is the exhibitor's responsibility to call for pick-up for any carrier other than the Preferred Carrier.

- **All re-routed or warehouse returned freight fees will be at the exhibitor's expense**
- **No liability will be assumed as a result of EPI re-routing or handling**

Preferred Carrier

UPS Freight
800-988-9889

All Other Carriers

Pick-up no later than Monday
February 13, 2012 at 2 PM

TurnKey Exhibit Rentals

CH&P 2012

Discount Deadline: December 20, 2011

COMPANY NAME _____ E-MAIL _____ BOOTH _____

Turnkey Rental A

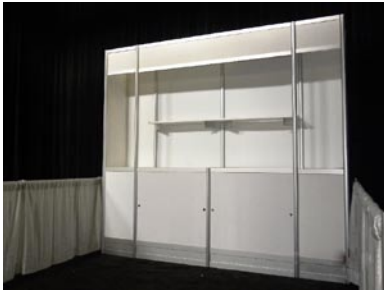


Turnkey Rental A Includes:

- Aluminum structure with lower cabinets with sliding doors, and middle shelf
- A curved white header panel with block lettering of your company name.
- 2 Arm Lights
- 10'x10' carpet (Gray, Blue, Red, Burgundy, Teal)
- 2 upholstered side chairs
- 1 wastebasket

PRICE \$1,400.00

Turnkey Rental B



Turnkey Rental B Includes:

- Aluminum structure with lower cabinets with sliding doors, and middle shelf
- A white header panel with block lettering of your company name.
- 2 Arm Lights
- 10'x10' carpet (Gray, Blue, Red, Burgundy, Teal)
- 2 upholstered side chairs
- 1 wastebasket

PRICE \$1,400.00

Turnkey Rental C

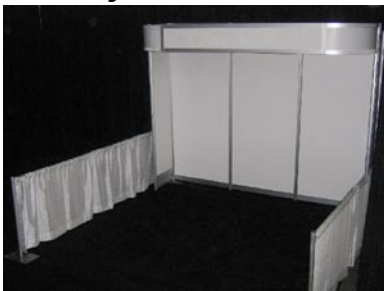


Turnkey Rental C Includes:

- Aluminum structure with three full meter back wall panels that could be replaced with graphics.
- A white header panel with block lettering of your company name.
- 2 Arm Lights
- 10'x10' carpet (Gray, Blue, Red, Burgundy, Teal)
- 2 upholstered side chairs
- 1 wastebasket

PRICE \$1,000.00

Turnkey Rental D



Turnkey Rental D Includes:

- Aluminum structure with three full meter back wall panels that could be replaced with graphics.
- A curved white header panel with block lettering of your company name.
- 2 Arm Lights
- 10'x10' carpet (Gray, Blue, Red, Burgundy, Teal)
- 2 upholstered side chairs
- 1 wastebasket

PRICE \$1,000.00

**Installation, Dismantle Labor & Freight Handling are included in price!
Need graphics? Only add \$300.00 for graphics!**

IMPORTANT: ALL ORDERS MUST BE PAID IN ADVANCE.
PLEASE INCLUDE YOUR FORM OF PAYMENT
ALL ORDERS MUST INCLUDE CALCULATION & PAYMENT FORM

ADVANCE
PAYMENT
ENCLOSED \$ _____



Signs Form

CH&P 2012

Discount Deadline: December 20, 2011

COMPANY NAME _____ E-MAIL _____ BOOTH _____

Pricing

| Quantity | Size | Discount | Regular | Total |
|----------|-----------|----------|---------|-------|
| | 7" x 11" | \$ 6.00 | \$ 8.00 | |
| | 11" x 14" | 11.00 | 14.00 | |
| | 7" x 44" | 22.00 | 28.00 | |
| | 22" x 28" | 43.00 | 56.00 | |
| | 28" x 44" | 86.00 | 112.00 | |
| | 40" x 60" | 167.00 | 217.00 | |
| | 38" x 85" | 225.00 | 292.00 | |

Custom Sizes: Call 1-800-234-8064 for a quote

Other Products and Services

| Qty | Product | Discount | Regular | Total |
|-----|--|----------|----------|-------|
| | Graphic Design (Per Hour) | \$90.00 | \$135.00 | |
| | Cardboard Easel Backs | 9.00 | 13.50 | |
| | Light Box, Table Top (Graphics not Included) | 44.00 | 66.00 | |
| | Sign Holder, Chrome (22 x28 signs) | 60.00 | 90.00 | |

- Backlit Graphics
- Vinyl Graphics
- Large Format Printing
- Logo Reproduction
- Vinyl Banners

Call 1-800-234-8064 for quotes

Important Information

1. The prices listed are for Print-Ready artwork. We do offer Graphic Design Services on request, Call Adam at ext.109.
2. **Acceptable Media:** Floppy Disk (3.5"), Zip Disk, CD-R, DVD-R. E-mail attachment if file is under 5 mb, or call for our client FTP information.
3. **Acceptable File Formats:** Vector .eps, Vector .pdf, Adobe Illustrator file (.ai), or full sized bitmap set at 150 dpi or above. Avoid additional fees by sending the right file format.
4. **Fonts:** Please make sure to convert all your fonts to outlines. If fonts are not converted, then original font might be replaced, creating an undesired look.
5. **Cancellation Policy:** Items cancelled after work is performed will be charged at 100% of original price.
6. Our prints are mounted on 3/16" Foamcore.
7. Orders received less than 10 days prior to show time are subject to overtime fees, plus delivery charge.
8. All advance ordered signs will be available for pick-up at show site service desk.
9. Any questions? E-mail: signdept@eventproductions.com
Phone: 1800-234-8064 ext. 109

SPECIFY COLOR: Black on White
 Blue on White
 Other _____

SPECIFY SHAPE:
 HORIZONTAL VERTICAL SPECIAL

PLEASE NOTE: No sign order can be processed without the following written authorization and full payment accompanying this order.

AUTHORIZED SIGNATURE

PRINT OR TYPE NAME

IMPORTANT: ALL ORDERS MUST BE PAID IN ADVANCE.
PLEASE INCLUDE YOUR FORM OF PAYMENT
ALL ORDERS MUST INCLUDE CALCULATION & PAYMENT FORM

ADVANCE
PAYMENT
ENCLOSED \$ _____



Attention Exhibitor:

**Please remit this
electrical form to
C.E.E.S.**

at 562-795-6637

**to ensure timely
receipt of your order.**

C.E.E.S., INC.
 CAPITAL EXPOSITION ELECTRICAL SERVICE
 P.O. BOX 550
 LOS ALAMITOS, CA 90720
 PH: (562) 430-8827 • FAX: (562) 795-6637

**MAIL OR FAX ORIGINAL WITH 100% REMITTANCE
 TEN DAYS PRIOR TO MOVE-IN DATE FOR ADVANCE PRICE**

C.E.E.S., INC.
 P.O. BOX 550
 3252 WOODSTOCK ROAD
 LOS ALAMITOS, CA 90720

California Home & Patio Show
 San Mateo Event Center
 February 10 - 12, 2012

| | | | | | | | | | | | | | | | | | | | | | | | | |
|--|--|--|--|--|-------------------------------------|--|--|--|--|-------------------|--|--|--|--|-------------------|--|--|--|--|-----------|--|--|--|--|
| COMPANY NAME | | | | | | | | | | BOOTH NO. | | | | | | | | | | | | | | |
| STREET ADDRESS | | | | | | | | | | CITY | | | | | STATE | | | | | ZIP | | | | |
| ORDERED BY (Signature) | | | | | | | | | | PLEASE PRINT NAME | | | | | | | | | | PHONE NO. | | | | |
| CREDIT CARD INFORMATION <input type="checkbox"/> MC <input type="checkbox"/> VISA <input type="checkbox"/> AmEx | | | | | ACCOUNT NO. <i>Print legibly</i> | | | | | | | | | | FAX NO. | | | | | | | | | |
| EXPIRATION DATE | | | | | CARDHOLDER'S SIGNATURE | | | | | | | | | | CARDHOLDER'S NAME | | | | | | | | | |

| | | | | | | |
|-----------------------------|--------------------|-----------------------------|---|----------------------|----------------------|-----------------|
| 120V | QTY. | GENERAL OUTLETS | ADVANCE PRICE | REGULAR PRICE | COLUMN 1 | |
| | | UP TO 500 WATTS | \$88.00 | \$134.00 | | |
| | | UP TO 1000 WATTS | 129.00 | 179.00 | | |
| | | UP TO 2000 WATTS | 165.00 | 249.00 | | |
| 120V | QTY. | MOTOR OUTLETS | ADVANCE PRICE | REGULAR PRICE | COLUMN 1 | |
| | | 5 AMP OR 1/4 HP | 85.00 | 139.00 | | |
| | | 10 AMP OR 1/2 HP | 142.00 | 219.00 | | |
| | | 15 AMP OR 1/3 HP | 158.00 | 239.00 | | |
| 208V | | 20 AMP OR 3/4 HP | 198.00 | 295.00 | | |
| | | 10 AMP OR 1/2 HP | 205.00 | 310.00 | | |
| | | 15 AMP OR 1 HP | 238.00 | 330.00 | | |
| | | 20 AMP OR 1 1/2 HP | 296.00 | 436.00 | | |
| | | 30 AMP OR 2 HP | 353.00 | 477.00 | | |
| | | 40 AMP OR 3 HP | 415.00 | 626.00 | | |
| | | 60 AMP OR 5 HP | 489.00 | 726.00 | | |
| | | 100 AMP OR 10 HP | 710.00 | 1040.00 | | |
| 1Ø | | 150 AMP OR 15 HP | 980.00 | 1450.00 | | |
| | | 200 AMP OR 25 HP | 1250.00 | 1890.00 | | |
| | 208V | | 10 AMP OR 1 HP | 289.00 | 419.00 | |
| | | | 15 AMP OR 2 HP | 329.00 | 469.00 | |
| | | | 20 AMP OR 3 HP | 399.00 | 591.00 | |
| | | | 30 AMP OR 5 HP | 471.00 | 739.00 | |
| | | | 40 AMP OR 7 1/2 HP | 559.00 | 829.00 | |
| | | | 60 AMP OR 10 HP | 659.00 | 979.00 | |
| | | 100 AMP OR 20 HP | 975.00 | 1411.00 | | |
| | | 150 AMP OR 30 HP | 1250.00 | 1889.00 | | |
| 3Ø | | 200 AMP OR 50 HP | 1690.00 | 2490.00 | | |
| | LIGHTING | QTY. | LIGHTING INCLUDES POWER FOR LIGHT ONLY | ADVANCE PRICE | REGULAR PRICE | COLUMN 1 |
| | | | 150 WATT ON STANCHION | 82.00 | 110.00 | |
| | | | 300 WATT ON STANCHION | 127.00 | 172.00 | |
| | | 500 WATT ON STANCHION | 134.00 | 202.00 | | |
| | 1000 WATT OVERHEAD | 178.00 | 266.00 | | | |
| MATERIAL & LABOR | QTY. | MATERIAL & LABOR | | | | |
| | | 15 AMP POWER STRIPS | | 20.00 | | |
| | | 15 FOOT EXTENSION CORDS | | 20.00 | | |
| | | 25 FOOT EXTENSION CORDS | | 25.00 | | |
| | | 50 FOOT EXTENSION CORDS | | 50.00 | | |
| | | 12/5 PIGTAILS | | 25.00 | | |
| | | 6/5 PIGTAILS | | 50.00 | | |
| | | BUCK & BOOST TRANSFORMER | | 135.00 | | |
| | | HRS. STRAIGHT TIME LABOR | | 119.00/HR | | |
| | | HRS. OVERTIME LABOR | | 179.00/HR | | |
| | | COLUMN #1 | TOTAL | | | |

PAYMENT POLICY

- 100% PAYMENT MUST ACCOMPANY EACH ORDER UNLESS PRIOR ARRANGEMENTS ARE MADE.
- WE ACCEPT CASH, CHECKS, MASTERCARD, VISA, AND AMERICAN EXPRESS FOR PAYMENT.
- ADVANCE PRICES APPLY ONLY TO ORDERS RECEIVED AT LEAST 10 DAYS PRIOR TO THE FIRST SHOW MOVE-IN DATE. ALL OTHER ORDERS WILL PAY REGULAR PRICES.
- ORDERS PLACED AT THE SHOW SITE MUST BE PAID UPON PRESENTATION OF INVOICE.
- NO REFUND WILL BE GIVEN FOR OUTLETS INSTALLED AND/OR SERVICES PROVIDED AND NOT USED. CLAIMS WILL NOT BE CONSIDERED UNLESS FILED BY THE EXHIBITOR PRIOR TO THE CLOSING OF THE SHOW.

WHEN ORDERING ELECTRICAL SERVICES

- LIGHTING OUTLETS SUPPLIED WITH TWO (2) CONNECTIONS PER OUTLET ORDERED.
- MOTOR OUTLETS SUPPLIED WITH ONE (1) CONNECTION PER OUTLET ORDERED.
- 480 VOLTS SERVICE(S) AND PRICE(S) ARE AVAILABLE UPON REQUEST.

CANCELLATION POLICY

ORDERS CANCELLED 7 DAYS PRIOR TO SHOW DATE 20% CHARGE. LESS THAN 7 DAYS NOTICE NO REFUND

460V WHEN AVAILABLE
 ALL CABLE RUNS OVER 100 FEET WILL BE CHARGED @
 \$1.00 PER FOOT PER CABLE PLUS LABOR

| | | | | | |
|-------------|------|----------------------|----------------------|----------------------|-----------------|
| 460V | QTY. | MOTOR OUTLETS | ADVANCE PRICE | REGULAR PRICE | COLUMN 2 |
| | | 10 AMP OR 1/2 HP | \$429.00 | \$589.00 | |
| | | 15 AMP OR 3/4 HP | 469.00 | 679.00 | |
| | | 20 AMP OR 5 HP | 589.00 | 869.00 | |
| | | 30 AMP OR 7 HP | 679.00 | 999.00 | |
| | | 40 AMP OR 10 HP | 798.00 | 1189.00 | |
| | | 60 AMP OR 15 HP | 949.00 | 1398.00 | |
| | | 100 AMP OR 25 HP | 1379.00 | 2098.00 | |
| | | 150 AMP OR 50 HP | 1798.00 | 2698.00 | |
| | | 200 AMP OR 75 HP | 2459.00 | 3539.00 | |
| | | COLUMN #2 | TOTAL | | |

ENTER THIS AMOUNT BELOW TO FINISH ORDER

| | |
|--------------------|--|
| COLUMN #1 | |
| COLUMN #2 | |
| GRAND TOTAL | |

| | |
|----------------------|--|
| CHECK NO. | |
| DATE RECORDED | |
| AMOUNT PAID | |

PLEASE READ PAGE 2 FOR RULES, REGULATIONS AND GENERAL INFORMATION

REGULATIONS AND GENERAL INFORMATION

1. ***C.E.E.S., INC. is not responsible for voltage fluctuation or power failure due to temporary conditions. For your protection you should install a surge protector on your computer(s). All electrical installations and connections to all electrical service should be made by a C.E.E.S., INC. electrician. C.E.E.S., INC. will not be responsible for any damage or loss of any equipment, component, computer hardware or software and/or any damage or injury to any person caused by the installation, connection or plugging into any electrical outlet by person other than C.E.E.S., INC. electrician.***
2. Electricity will be turned on within 30 minutes of show opening and turned off within 30 minutes after show closing.
3. 24 hour service to any outlet will be double listed price.
4. Dedicated power is double the listed price, and can only be guaranteed before show opening with advance arrangements for date needed.
5. All electrical outlets will be installed on the floor at the draped backwall of in-line booths and peninsula spaces. Exhibitors with hardwall displays must arrange for power to be dropped inside the booth if necessary; this will be done on a time and material basis. Overhead power to island booths will be dropped to the main location per the exhibitor's floorplan. If no plan is provided, the power will be installed at our discretion. Additional overhead power drops are chargeable on a time and material basis. Distribution and connection(s) to equipment is chargeable on a time and material basis. For further information please refer to the **Exhibitor Electrical Information** insert.
6. Local ordinances prohibit more than 2000 watts per lighting circuit and only one connection for power and motor outlets.
7. All wiring, motors, electrical installations, etc. must be approved. To prevent overloading of circuits, exhibitors cannot add wattage except as ordered.
8. All electrical permits required by the Local Building and Safety Code will be obtained by the electrical contractor.
9. All flood light, column, and wall outlets are not a part of booth space. A separate outlet must be ordered at regular price for each piece of equipment to be connected.
10. Special hanging, hookups, repairs, or installation of electrical equipment will be done on a time and material basis.
11. Installation is subject to Local Union Contract and jurisdiction.
12. All equipment should be properly tagged and wired with full information as to current, voltage, phase, cycle, horsepower, etc. and ready for connection.
13. All outlets over 20 amps and with a voltage over 150 volts require electrical labor. This includes a 1 hour minimum to inspect exhibitors that are pre-wired to plug into our system.
14. Any labor rates indicated on forms are based on the current I.B.E.W. union contract at time of printing forms. These rates are subject to change without notice based on the prevailing union contract at time of show.

ELECTRICAL CONTRACTOR'S LABOR RESPONSIBILITIES

As the Official Electrical Contractor we will be responsible for

- All under-carpet distribution of electrical wiring.
- All facility overhead distribution of electrical wiring, including coaxial cable, fiber optics and the distribution of same from product to booth and from booth to booth.
- All motor and equipment hookups requiring hard wire connections.
- Installation and/or repair of electrical fixtures.
- Installation of electrical motors to be energized and electrical apparatus.

The above items require electrical labor, which may be ordered in the Electrical Labor section of the form on the reverse side.

ELECTRICAL CODE

Electrical Services for Exhibits at Convention Facilities

Electrical requirements for an exhibit at all convention facilities are for the safety of all exhibitors and are based on national Electrical Code and local ordinances.

Too frequently, fires have been traceable to faulty wiring, sometimes because of carelessness and sometimes because of lack of understanding of the risks involved.

In the interest of public safety, exhibits in the convention facilities may be inspected to determine if any violations exist. If they are found, qualified electricians are available to correct the problems. This work will be performed on a labor and material basis. If the exhibitor does not wish to have the fault corrected, electrical service to the offending booth will not be connected.

If an exhibitor is not informed or does not understand basic safety standards for electrical wiring, an electrician should be consulted before shipment is made to the convention facilities.

Serious risks are involved which can be eliminated by understanding the basic requirements of safe wiring inside your booth. For the safety of you and the public, remember these points:

- All wiring must have a 3-wire grounded cord with a minimum of #12 gauge.
- Spot or flood lighting is a hazard when lamps are too close to fabrics or other material which can be affected by heat.
- The use of clip-on sign sockets, latex or lamp cord wire in displays, or the use of 2-wire clamp-on fixtures, is prohibited by order of fire prevention bureaus at trade shows and conventions.
- Our company rents approved extension cords and plug strips which provide safe multiple plug-in capabilities.
- Zip cords or two-wire cords are ungrounded and could result in safety hazards. Their use is forbidden in all convention facilities. **Please leave all 2-wire cords at home!**

To Advance Warehouse:

Event Productions, Inc.
651 West Tower Ave.
Alameda, CA 94501

Exhibitor: _____

Booth #: _____

Name of Show: **CH&P 2012**

Date/Location: February 10 - 12, 2012 • San Mateo Event Center

To Advance Warehouse:

Event Productions, Inc.
651 West Tower Ave.
Alameda, CA 94501

Exhibitor: _____

Booth #: _____

Name of Show: **CH&P 2012**

Date/Location: February 10 - 12, 2012 • San Mateo Event Center

To Show Site:

**San Mateo Event Center
C/O Event Productions, Inc.
2495 S. Delaware St.
San Mateo, CA 94403**

Exhibitor: _____

Booth #: _____

Name of Show: **CH&P 2012**

Date/Location: February 10 - 12, 2012 • San Mateo Event Center

To Show Site:

**San Mateo Event Center
C/O Event Productions, Inc.
2495 S. Delaware St.
San Mateo, CA 94403**

Exhibitor: _____

Booth #: _____

Name of Show: **CH&P 2012**

Date/Location: February 10 - 12, 2012 • San Mateo Event Center